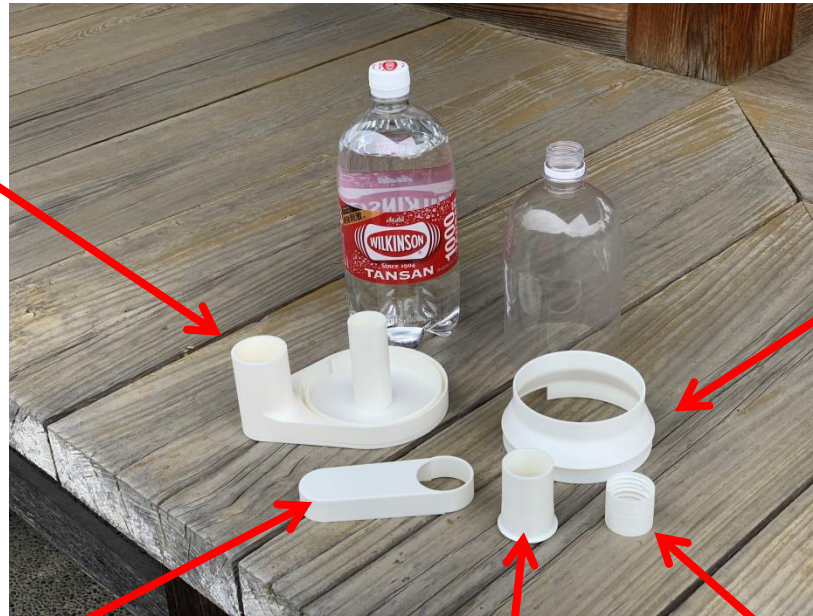


Cyclone dust separator for a handy vacuum cleaner



Partslist

cyclonecoreF.stl



bottleadapter.stl

cyclonecoreB.stl

backnozzle.stl

bottlecoupler.Stl

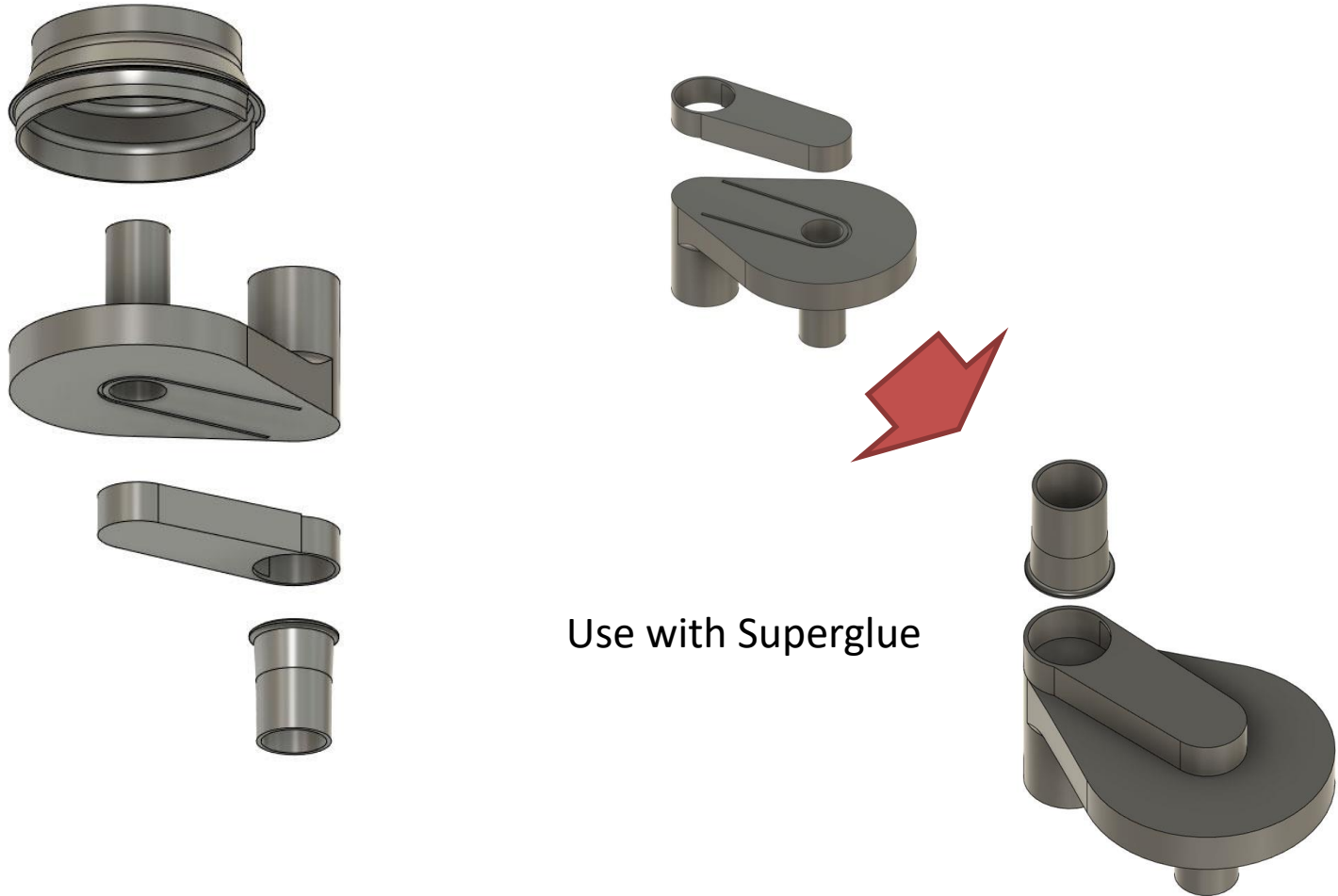
Print setup

material	PLA						
Nozzle	0.4						
assemble	superglue						
PartsNo	PartsName	Quantity	layerhight	OuterPerimeter	infillrate	infilltype	support
1	1Bottlecoupler.stl	1	2.00	3	20%	gyroid	no
2	2cyclonecoreF.stl	1	2.00	3	20%	gyroid	yes
3	3cyclonecoreB.stl	1	2.00	3	20%	gyroid	no
4	4backnozzle.stl	1	2.00	3	20%	gyroid	no
5	bottleadapter.stl	1	2.00	3	20%	gyroid	yes

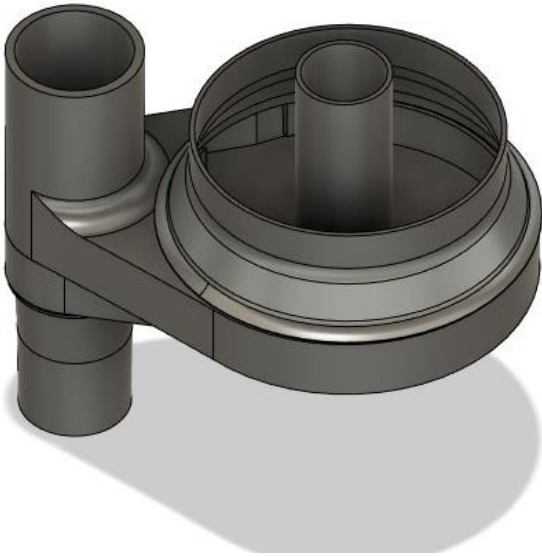
PET prastick bottle

Carbonated water bottle will be fine. BC relatively hard.

Assemble



assemble2



Cut the bottle and assemble with bottle adapter. Don't use a Glue with Bottle adapter and cyclone coreF. Just press fit.

complement1

Print settings:

- 0.20mm QUALITY (modified)
- Filament: Generic PLA
- Printer: allen * Original Prusa i3 MK3 & MK3+
- Supports: Everywhere
- infill: 20%

Feature type	Time	Percentage	Used filament
Perimeter	294m	25.2%	11.96 m 33.66 g
External perimeter	294.7m	32.7%	7.85 m 23.41 g
Overhang perimeter	18m	0.0%	0.01 m 0.02 g
Internal infill	1920m	15.8%	3.99 m 11.89 g
Solid infill	1918m	15.6%	7.92 m 23.62 g
Top solid infill	14m	2.7%	0.95 m 2.82 g
Bridge infill	23m	4.6%	1.11 m 3.32 g
Gap fill	6m	1.1%	0.08 m 0.25 g
Skirt/brim	40m	0.1%	0.04 m 0.12 g
Support material	9m	1.8%	0.53 m 1.56 g
Support material interface	3m	0.5%	0.10 m 0.31 g
Custom	14m	0.0%	0.02 m 0.06 g

Estimated printing times (normal mode):
First layer: 24m
Total: 89.29m

Object manipulation:

World coordinates	X	Y	Z
Position:	125	105	37 mm
Rotate:	0	0	0 °
Scale factors:	100	100	100 %
Size:	146.01	112.68	74 mm

Info:

- Size: 146.01 x 112.68 x 74.00 Volume: 10559.67
- Facets: 4040 (1 shell)
- No errors detected

Sliced Info:

- Used Filament (g): 100.42
- Used Filament (m): 33.67
- Used Filament (mm³): 80902.02
- Cost: 2.55
- Estimated printing time:
 - normal mode: 89.29m
 - stealth mode: 89.31m

Export G-code

complement2

Print settings:

- 0.20mm QUALITY (modified)
- Generic PLA
- Prusa: alien * Original Prusa i3 MK3 & MK3+
- Supports: Support on build plate only
- IPM: 20%
- Brms

Feature type	Time	Percentage	Used filament
Perimeter	40m	24.7%	3.44 m 10.25 g
External perimeter	167m	42.9%	3.23 m 9.65 g
Overhang perimeter	14s	0.2%	0.01 m 0.03 g
Solid infill	30m	12.3%	2.01 m 6.01 g
Top solid infill	3m	1.5%	0.22 m 0.64 g
Bridge infill	23s	0.2%	0.02 m 0.05 g
Gap fill	22m	13.5%	1.25 m 3.73 g
Skirt/Brms	5m	3.2%	0.21 m 0.62 g
Support material	1m	0.5%	0.04 m 0.13 g
Support material interface	1m	0.6%	0.04 m 0.11 g
Custom	14s	0.3%	0.02 m 0.06 g

Estimated printing times (Normal mode):
First layer: 13m
Total: 2h40m
[Show stealth mode](#)

Sliced Info:

- Used Filament (g): 31.28
- Used Filament (m): 10.48
- Used Filament (mm²): 25222.90
- Cost: 0.79
- Estimated printing time:
 - normal mode: 2h40m
 - stealth mode: 2h41m

Export G-code

complement3

Unsaved - PrusaSlicer-2.4.2 based on Slic3r

File Edit Window View Configuration Help

Printer Print Settings Filament Settings Printer Settings

Feature type	Time	Percentage	Used filament
Perimeter	56m	24.0%	4.98 m 14.86 g
External perimeter	1h46m	46.4%	5.33 m 15.95 g
Overhang perimeter	4h	0.3%	0.04 m 0.11 g
Solid infill	8m	2.5%	0.30 m 0.90 g
Bridge infill	1m	0.0%	0.06 m 0.18 g
Gap fill	12m	5.0%	0.27 m 0.80 g
Skirt/Worm	9m	3.7%	0.34 m 1.01 g
Support material	38m	75.5%	1.74 m 5.20 g
Support material interface	5m	2.0%	0.19 m 0.55 g
Custom	14s	0.1%	0.02 m 0.06 g

Estimated printing times (Normal mode)

First layer: 14m
Total: 3h54m
[Show stealth mode](#)

ORIGINAL PRUSA i3 MK3
by Josef Prusa

Print settings:

- 0.20mm QUALITY (modified)
- Filament: Generic PLA
- Printer: alien * Original Prusa i3 MK3 & MK3S+
- Supports: Support on build plate only
- IPM: 20%
- Brm:

Name	Editing
adapter2 v1.stl	<input checked="" type="checkbox"/> <input type="checkbox"/>
bottlecoupler v2.stl	<input checked="" type="checkbox"/> <input type="checkbox"/>

Sliced Info

- Used Filament (g): 36.57
- Used Filament (m): 13.27
- Used Filament (mm³): 51913.61
- Cost: 1.01
- Estimated printing time:
 - normal mode: 3h54m
 - stealth mode: 3h55m

View Feature type Show Options

299543 299528

Export G-code